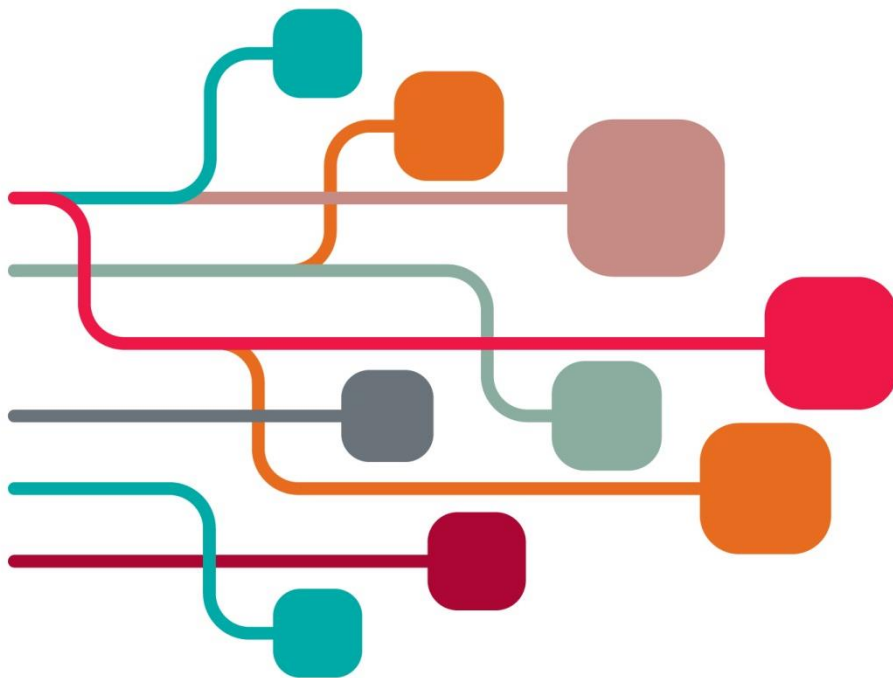


SCONUL Summer Conference and AGM 2016

22-24 June 2016

Library transformation



Mercure Cardiff Holland House Hotel
24-26 Newport Road, Cardiff CF24 0DD

Contents

Conference programme	page 3
Venue information	page 7
Using wifi	page 9
Speaker biographies	page 11
Delegates	page 23
Welcome drinks reception	page 31
Conference dinner	page 33
Parallel sessions	page 35
Parallel sessions attendee lists	page 37
Fringe	page 54
Meet our sponsors	page 58
Exhibition layout	page 66

Conference programme

Wednesday 22 June	
18.30 - 20.00	Welcome drinks reception, Mercure Cardiff Holland House Hotel Caernarfon Room
Thursday 23 June	
09.45	Registration Calon Lobby
10.25	Welcome from Liz Jolly, Chair of SCONUL
10.30	Keynote speech: Fostering effective learning environments Maria Nesdale, Education Practice Area Leader and Senior Associate, Gensler
11.30	Coffee Calon 2 and Calon Lobby
12.00	Data and decisions <ul style="list-style-type: none"> • What kind of evidence does the sector need? Nancy Bell, Visiting Scholar, Department of Computer Science and Information, Northumbria University • Data capability Andy Youell, Director, Higher Education Data and Information Improvement Programme
13.00	Lunch Urban Bar and Kitchen Restaurant
14.00-15.00	Parallel sessions: Collaboration in practice <ul style="list-style-type: none"> • Embracing public engagement in libraries Pembroke Room Charlotte Haigh, Associate Professor in Human Physiology and Academic Lead for Public Engagement with Research, University of Leeds • Research data management in the arts and humanities: a few difficulties Kidwelly Room Martin Donnelly, Senior Institutional Support Officer, Digital Curation Centre • WHELF shared LMS: looking back and looking forward Caerphilly Room Gareth Owen, Programme Manager, WHELF Shared LMS • Making collaboration work - a theoretical and practical consideration of the requirements for library collaborations to be successful and sustained Brecon Room Richard Parsons, CIO, Director of Library and Learning Centre and University Librarian, University of Dundee and Tracey Stanley, Deputy Librarian and Assistant Director, Cardiff University

Thursday 23 June	
15.10	The SCONUL Fringe (see page 54 – 57 for details)
15.55	Coffee
16.30	<p>Moderated discussion: the transformative impact of the open agenda</p> <p>Moderator: Ann Rossiter, SCONUL Executive Director</p> <ul style="list-style-type: none"> • Caroline Edwards, Lecturer in 21st Century Literature, Birkbeck, University of London and Director of the Open Library of Humanities • Ross Mounce, Postdoctoral Research Associate, Department of Plant Science, Cambridge University • Xenia van Edig, Business Development, Copernicus
17.30	Close
18.30	Meet in the Calon Lobby to walk to the National Museum Cardiff
19.00	Conference Dinner, National Museum Cardiff Sponsored by RefME

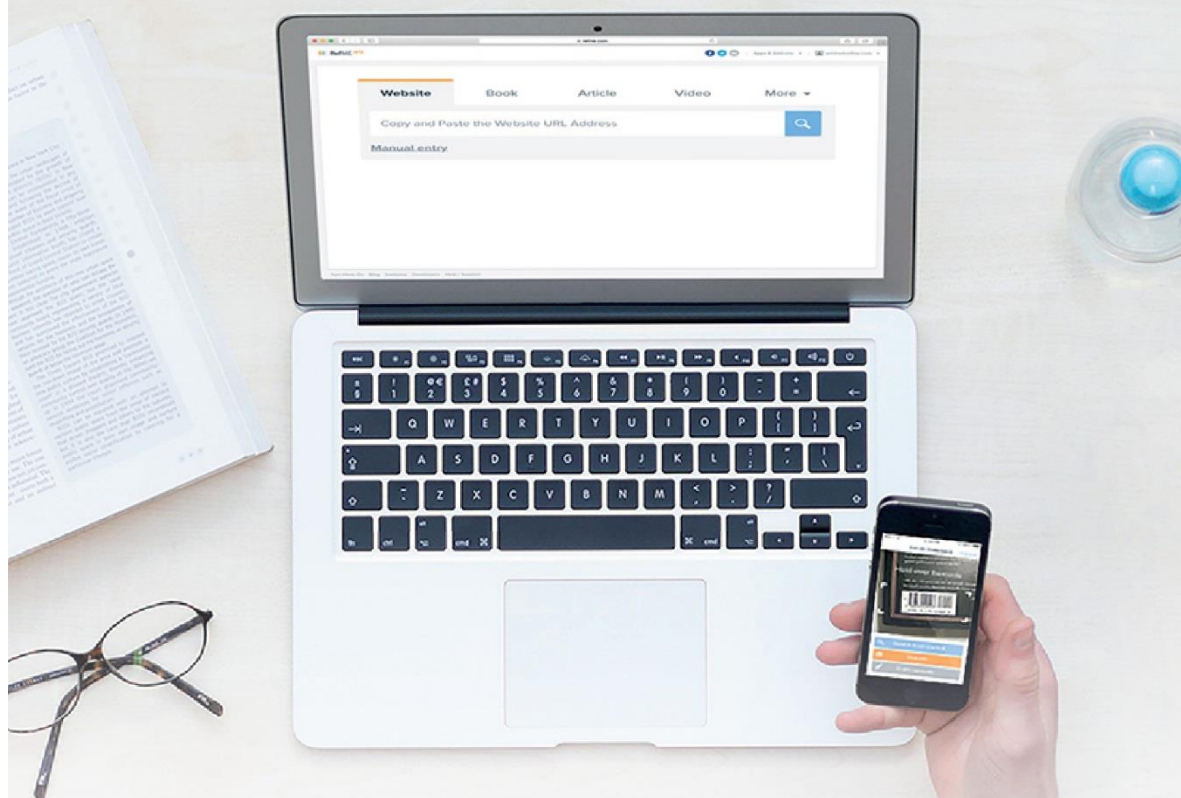
Friday 24 June	
10.00	SCONUL AGM (see separate AGM pack)
10.30	Coffee
11.00	Keynote speech: Vision for the future of academic libraries David Lewis, Dean, University Library, Indiana University-Purdue University Indianapolis
12.00	The SCONUL Fringe (see page 54-57 for details)
12.45	Lunch Urban Bar and Kitchen Restaurant
13.30	Parallel sessions: Collaboration in practice <ul style="list-style-type: none"> Embracing public engagement in libraries Pembroke Room Charlotte Haigh, Associate Professor in Human Physiology and Academic Lead for Public Engagement with Research, University of Leeds Research data management in the arts and humanities: a few difficulties Kidwelly Room Martin Donnelly, Senior Institutional Support Officer, Digital Curation Centre WHELF shared LMS: looking back and looking forward Caerphilly Room Gareth Owen, Programme Manager, WHELF Shared LMS Making collaboration work - a theoretical and practical consideration of the requirements for library collaborations to be successful and sustained Brecon Room Richard Parsons, CIO, Director of Library and Learning Centre and University Librarian, University of Dundee and Tracey Stanley, Deputy Librarian and Assistant Director, Cardiff University
14.30	Coffee
14.50	Update from SCONUL: Leading transformation Chaired by Mark Toole, Chair of SCONUL <ul style="list-style-type: none"> John Tuck, Collaboration Strategy Group Chair Pete Ryan, Communications Strategy Group Chair Kitty Inglis, Content Strategy Group Chair Alison Baud, Leadership Task and Finish Group Chair Judith Keene, Transformation Strategy Group Vice-Chair
15.35	Closing remarks Mark Toole, Chair of SCONUL
15.45	Close



RefME

RefME Institute

Empowering institutions to improve the student research experience



- ★ Empowers students to confidently cite a wide range of sources and improve the quality of their written work.
- ★ Reduces the time and resources you spend training students to reference accurately.
- ★ Delivers high student engagement with the tool and builds understanding of the referencing process.
- ★ Reduces the number of enquiries and pressure on the library around essay submission dates.

Contact us

✉ institute@refme.com ☎ +44 (0)203 034 6060

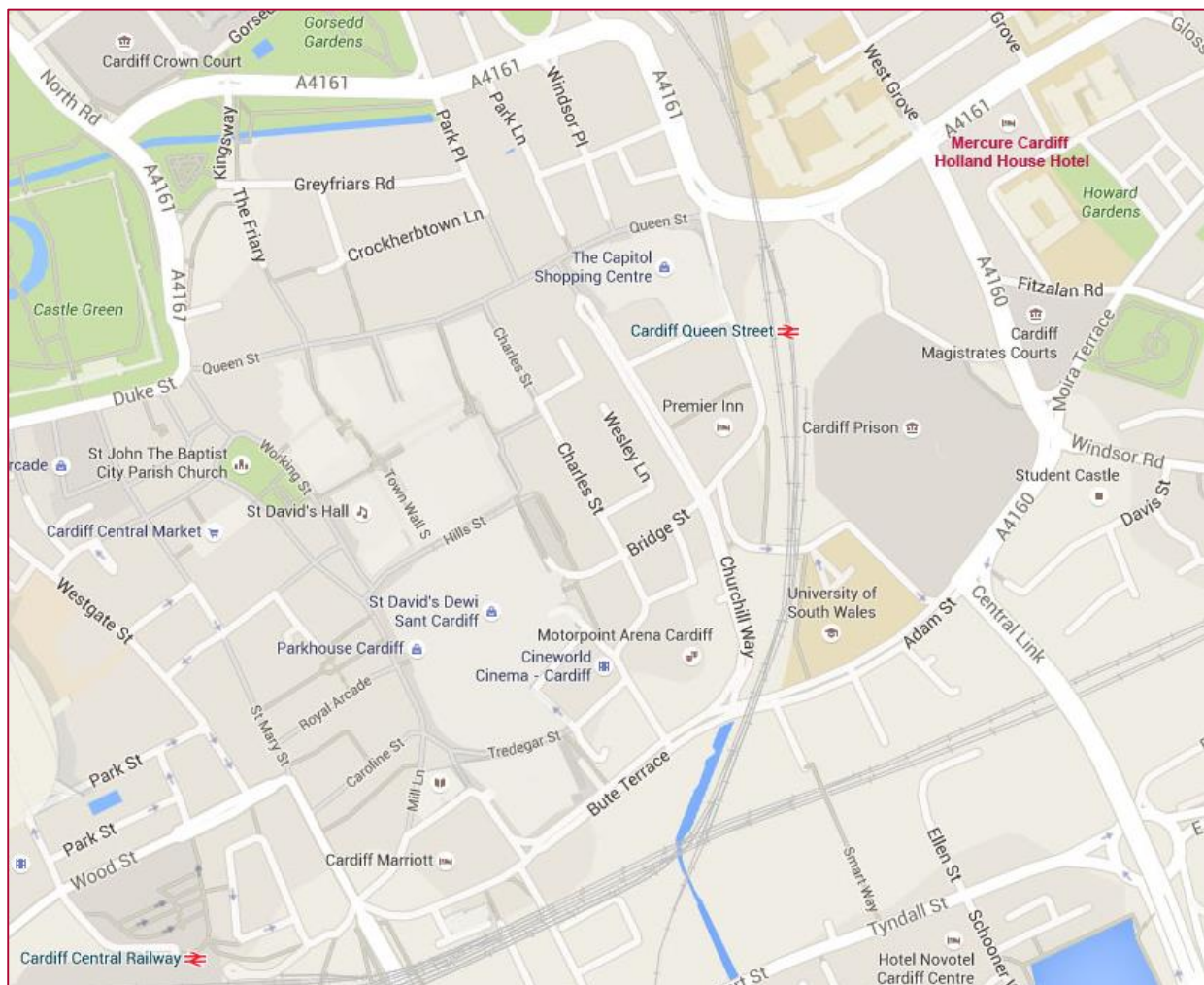
Conference hotel

The SCONUL Summer Conference and AGM 2016 will take place at the Mercure Cardiff Holland House Hotel in Cardiff.

The main conference hall, Calon 1, is on the ground floor. The meeting rooms, Brecon, Kidwelly, Pembroke and Caerphilly are on the second and third floors.

Getting to the conference hotel

Mercure Cardiff Holland House Hotel
24-26 Newport Road
Cardiff CF24 0DD
www.mercure.com/Cardiff





sierra

LIBRARY SUCCESS
POWERED BY

 **innovative**

LIBRARY SERVICES PLATFORM

Discovery • Cataloguing • Cloud • Mobile • Analytics

Using wifi at the conference hotel



Wifi is available free of charge within the hotel for all SCONUL delegates. To connect to the internet please follow the steps below:

- In your device settings log onto the Mercure Network
- open your web browser on your electronic device and you should be automatically directed to the login webpage
- enter your e-mail address and tick the box to agree to the terms and conditions.



#sconul2016

The library at the heart
of teaching, learning and research

To find out more about libraries at the heart of teaching, learning and research visit <http://bit.ly/1QJtE82>

ExLibris[®]
a ProQuest Company

Speakers

In order of appearance



Liz Jolly

Director of Library and Information Services, Teesside University and Chair of SCONUL

Liz has been Chair of SCONUL since June 2014. Before joining Teesside University, she was Associate Director (Services and Operations) in Information and Learning Services at the University of Salford. She has held departmental senior management positions at East London and London South Bank universities and has also worked at Huddersfield, Leeds Beckett, Lincoln and Manchester Metropolitan universities.

Liz is a Fellow both of CILIP and the Royal Society for the encouragement of Arts, Manufactures and Commerce (RSA). A former Chair of the CILIP University, College and Research Group, Liz is a member of the Editorial Board of the *New Review of Academic Librarianship* and a member of the British Library Advisory Council.

Liz wrote the chapter, 'Space: Changing the Boundaries' in *Collaboration in Libraries and Learning Environments*, edited by Maxine Melling and Margaret Weaver (Facet Publishing, 2013).



Maria Nesdale

Education Practice Area Leader and Senior Associate, Gensler

As a firmwide leader of Gensler's Education Practice area, Maria guides teams in designing educational environments that deliver an enhanced learning experience for students of all levels. A Senior Associate and Registered Architect, Maria is regarded as a specialist in her field, and was invited to participate on the World Architecture News awards jury panel for education in 2012 and the World Architecture News Effectiveness Awards in 2013. She earned a B.A. (Hons) in Architecture at the University of Portsmouth and a Diploma in Architecture at the University of Westminster, where she also pursued Postgraduate Certificate Professional Practice in Architecture.

Security

We provide experienced, customer focussed staff who deliver more than just security.

- Weekend / late hours providing additional back up to library staff
- Access control
- Library patrols
- Lock down
- 24/7 cover during exam revision periods
- Flexible cover required – 7 hours + – only pay for the hours you need to cover
- Customer Service – book collection, book shelving, photocopier, self-service machine maintenance, general student assistance
- We can provide staff to integrate with in-house library staff to provide reliable back up on a long term basis helping to cover vacation and sickness cover

Your flexible partner for library cover



 **Reassurance**
Security Services

Best of both worlds



 **Reassurance**
Resource Management



Library Assistants

Looking for high quality, customer focused evening library staff?

We provide a reliable out of hours service, with staff managing front-line services and administrative duties.

We can provide high calibre, dedicated and enthusiastic staff who will be fully trained to provide the following services;

- Emptying self-service returns sorter bins/ trolleys and re-sensitizing stock
- Emptying trolleys and shelving/ moving stock
- Assist with directional and initial information enquiries, including assistance with the Online Public Access Catalogue (OPAC) and helping them to find books
- Assist users with the use of copiers and printers and restock paper trays
- Reporting faults
- Keeping the Library space in good order through regular tidying, clearing rubbish, shelving and filing
- Gather and record basic statistics such as head counts

0845 372 1995

Kathryn@reassurancesecurityservices.co.uk
www.reassurancesecurityservices.co.uk



Nancy Bell

Visiting Scholar, Department of Computer Science and Information, Northumbria University

Nancy Bell is currently on secondment from the National Archives to Northumbria University's Department of Computer Science and Information. Over the next 12 months, she will be leading a collaborative research project to explore how documentary heritage collections are valued as the boundaries of collecting organisations blur in the digital arena, and to define the evidence necessary to demonstrate impact.

Prior to taking up this role she was Head of Collection Care at the National Archives, where she was responsible for preservation of The National Archives collection. In addition, she has acted as principle investigator and collaborator in various heritage science research projects, and is an active member of the National Heritage Science Forum.



Andy Youell

Director, Higher Education Data and Information Improvement Programme

Andy has spent 25 years working with data and information and with the systems and people that process it. Four years in the aviation industry was followed by five years with the PCFC and HEFCE where he ran data collections and liaised with the newly-formed HESA. In 1996 he joined HESA in a role focussed on improving the standard, and the broader understanding, of data quality. Andy became Director of Quality and Development in 1998 and assumed responsibility for the development of HESA systems (including the core data collection system and the

HEIDI analysis system) and for quality issues throughout HESA via the ISO9001 standard.

In 2013 Andy was appointed Director of the Higher Education Data & Information Improvement Programme (HEDIIP) which has been created to reduce the burden and increase the value and accessibility of data and information about HE.

Andy has advised governments in Bulgaria, Saudi Arabia and Oman on data processing and quality issues and he has worked on a UN project in Jordan that developed simple statistical reporting for universities across the Middle East.



Dr Charlotte Haigh

Associate Professor in Human Physiology and Academic Lead for Public Engagement with Research, School of Biomedical Sciences, University of Leeds

Charlotte is the academic lead for Public Engagement with Research at the University of Leeds as well as Associate Professor in Human Physiology. She has worked at the University for the last 13 years and during this time developed a passion for public engagement, encouraging her colleagues to get involved where possible. Charlotte works closely with the National Coordinating Centre for Public Engagement (NCCPE), a centre interested in developing effective cultures of support for public engagement within higher education.



Martin Donnelly

Senior Institutional Support Officer, Digital Curation Centre

Martin currently heads up the DCC's consultancy services, and represents the DCC-Edinburgh contingent on the EU-funded FOSTER project. He has assisted a number of UK universities in assessing and improving their research data management capabilities and infrastructures, raising awareness and providing training to staff and students, and liaising with senior management to make a robust case for investment.

He has advised the Jisc-funded KAPTUR project, and has worked with the University of the Arts London to produce the first iteration of their research data management policy and convene arts-focused data workshops. Martin organised a Research Data Management Forum event on this topic in Oxford in 2013, and regularly gives talks on arts and humanities data in the UK and Europe.

Martin's academic background is in English Literature and Information Technology, and before joining the University of Edinburgh, he was Technology Assessor and Tutor/Lecturer at the Humanities Advanced Technology and Information Institute (HATII) at the University of Glasgow. Martin previously served as Policy Officer at the University of Glasgow and as Quality Officer (Strategic Development) at Edinburgh College of Art.



Gareth Owen

Programme Manager, WHELF Shared LMS

Gareth is a qualified librarian who has worked in higher education, further education and parliamentary libraries and as a programme manager in government. He is also a qualified programme manager and is responsible for managing the shared library management system project for all eleven institutions of the Wales Higher Education Libraries Forum.



Richard Parsons

CIO, Director of Library and Learning Centre and University Librarian, University of Dundee

In addition to his role at Dundee, Richard is the Chair of the SHEDL Steering Group. Richard's career in information management began in the Life Sciences discipline as a scientist and lecturer, and subsequently involved senior management of elearning at the university. Richard completed his first degree in New Zealand and his PhD at the Australian National University in Canberra. He has lived in the UK for 27 years.



Tracey Stanley

University Librarian and Assistant Director, Cardiff University

Tracey has been at Cardiff for nearly six years before which she worked in various senior posts at the university libraries of Leeds and York, plus for a period as Assistant Director for IT at the National Institute for Health Research. At Cardiff she has responsibility for the customer services operations of 13 site libraries, together with HR and finance issues, the library IT programme, education and printing and copying services. She has overseen successful accreditation for the government Customer Service Excellence standard. She is Programme Manager for the Transforming Libraries Programme, which is focusing primarily on

the development of a new library building and provides leadership on the overall library strategy and annual action plans, including measuring performance.

Tracey is Programme Director for the Wales-wide Shared Library Management System initiative; Chair of the CILIP Cymru Wales Committee; and a joint convenor of the Research Libraries UK Associate Directors Network.

bruynzeel-storage.com
freephone 0800 220 989



Photos: © Simon Hadley

Better by Design

Storage Solutions for Modern Academic Libraries

At Bruynzeel, we don't just manufacture shelving. Our aim is to create inspiring, custom-designed library storage: intelligent solutions that combine space efficiency with accessibility.

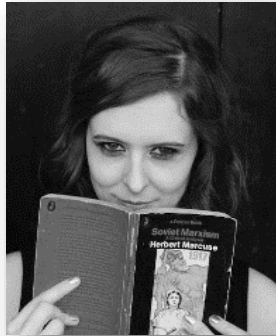
To find out more about our design-led library systems and to book a free consultation, call **0800 220 989** or visit bruynzeel-storage.com/library



'We knew we needed a trusted academic library supplier. Bruynzeel's experience and expertise were key factors in our decision.'

Tim Wales –
Director of Library Services,
University of West London

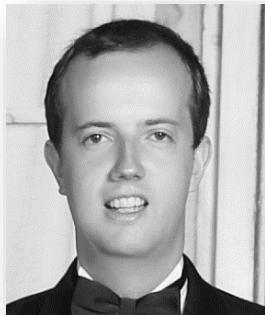
 **bruynzeel storage systems**



Dr Caroline Edwards

Lecturer in Modern and Contemporary Literature,
Birkbeck, University of London and Director of the Open
Library of Humanities

Dr Caroline Edwards is Director of the Open Library of Humanities (OLH) and one of its founders. Caroline has given numerous talks on open access in Europe and North America, and currently oversees an OLH editorial network of more than 50 scholars. She also edits the open-access journal of 21st-century literary criticism *Alluvium* and is Secretary of the British Association for Contemporary Literary Studies.



Ross Mounce

Postdoctoral Research Associate, Department of Plant
Science, Cambridge University

Ross is a postdoctoral research associate in Sam Brockington's lab at the Department of Plant Sciences, University of Cambridge. His research is currently on ex-situ conservation of threatened plant species around the world. More generally Ross' skills and knowledge-base are in phylogenetics, bioinformatics, systematics, and conservation biology.

In 2016 Ross became a Software Sustainability Institute fellow and a Data Carpentry instructor. Prior to this he was a Panton Fellow for Open Data in Science. Ross sits on the council for the Systematics Association, as well as the PeerJ Preprints Advisory Group, and is a founding editor of Research Ideas and Outcomes (RIO) <http://riojournal.com/>.

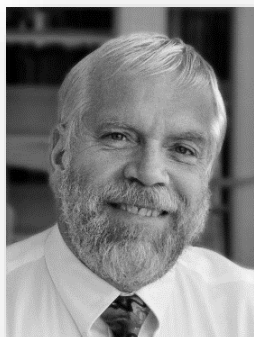


Dr Xenia van Edig

Business Development, Copernicus

Since the beginning of 2012, Xenia has been working in Business Development at Copernicus Publications, an open-access publisher based in Göttingen, Germany. At Copernicus, she is responsible for the acquisition and development of new journals. She is also in charge of the establishment of institutional agreements regarding the central settlement of article processing charges (APCs) between various institutions and Copernicus. Since September 2015, she has been a member of the board of directors of OASPA, the Open Access Scholarly Publishers Association.

Before joining Copernicus, her academic research (MSc in geography, PhD in agricultural sciences) led Xenia to many long-term stays abroad in Asia, Africa, Australia, and Latin America. She was involved in different university boards, has participated in several scientific conferences, and has published scientific articles. In addition to being employed at the University of Göttingen for several years, she worked as a scientific coordinator of an international project at the University of Kassel. While there, she became involved in the publication of an open-access journal for the first time.



David Lewis

Dean, University Library, Indiana University-Purdue University Indianapolis

David has a BA from Carleton College and an MLS from Columbia University. He began his library career as a reference librarian and became a library administrator. Since 2000 he has been the Dean of the University Library at Indiana University-Purdue University Indianapolis. Mr. Lewis has published over 40 articles and chapters. His 1988 article 'Inventing the Electronic University' was selected as one of seven "landmark" articles to be republished in the 75th anniversary issue of *College and Research Libraries*. His book *Reimagining the Academic*

Library was published by Rowman and Littlefield in May 2016. He is a masters swimmer who enjoys traveling to parts of the world where red wine is made.



Mark Toole

Head of Libraries and Learning Resources, Nottingham Trent University and Vice-Chair of SCONUL

Mark has been Head of Libraries and Learning Resources at Nottingham Trent University since January 2014. Previous posts include Director of Information Services at the universities of Stirling and Brighton and management posts at the University of Kent and the LSE.

He is currently Vice-Chair of SCONUL as well as a member of the SCONUL Executive Board. He will be taking over as Chair of SCONUL at this year's AGM. He also chairs the Jisc Access and Identity Management (AIM) Consultation Group and is a member of the Jisc Collections Knowledge Base + Steering Board, chairing its Technical Advisory Group, and of the EDINA Management Board.



John Tuck

Director of Library Services, Royal Holloway University of London and Chair of the Collaboration Strategy Group

John Tuck has worked in SCONUL libraries for more than 38 years. After 20 years in various roles at the University of Manchester Library, including as a SCONUL trainee and later as joint Deputy Librarian (1996-97), he moved to Oxford as Deputy to the Director of University Library Services and to Bodley's Librarian (1998-2002) where a key focus of his work was the integration of libraries funded by the University. He then spent nearly six years at The British Library as Head of British

Collections (2002-08) before taking up his current post as Director of Library Services at Royal Holloway University of London in 2008.

He has served in a number of advisory roles for the sector, including as chair of the UK Web Archiving Consortium during his time at The British Library, project director of the Jisc-funded M25 Consortium Search25 and E-BASS25 projects, and as a member of ABES (Agence Bibliographique de l'Enseignement Supérieur) and the LIBER Workforce and Leadership Working Group that he will chair in 2016-17.

PROUD SPONSORS OF SCONUL 



EDUCATION STORAGE SPECIALISTS

MAKING SPACE WORK FOR YOU

Rackline have been providing steel storage solutions to the Education Sector for the past 30 years, during this period we have worked on various projects which includes areas such as libraries, laboratories, store rooms and office spaces.

We have a large team of designers who will attend site, provide storage audits, design space plans and provide detailed quotations for your current budget or for your future plans.

Call us today on 01782 770144 for further information.



Rackline Limited, Oaktree Lane, Talke, Newcastle-Under-Lyme, Staffordshire ST7 1RX
T: 01782 777666 E: now@rackline.co.uk www.rackline.com





Pete Ryan

Director of Library and Learning Resources, Canterbury Christ Church University and Chair of the Communications Strategy Group

Pete has over 25 years of experience in libraries in the public and HE sectors. As Head of Library Services at Canterbury Christ Church University he is a champion of the student experience, learning innovation and the research endeavour, and is committed to the student and researcher voice in service development. Working in a competitive environment with financial challenges, the pursuit of efficiency and effectiveness are also critical to his role. Through Pete's contribution to the planning, development and implementation of Augustine House Library and Student Services Centre (the joint winner of the 2013 SCONUL Library Design Award) he has led Library Services through a period of significant change and has contributed to the development of university student services, in partnership with the universities of Kent and Greenwich, the NHS and the local county council, that are fit for the 21st century.

Whilst working in public libraries he was an active committee member of the Public Libraries Group of CILIP, and spent five years in the role of Treasurer. Pete has been actively involved in regional library developments and was a member of the M25 steering group for four years, during which time he chaired the Marketing and Communications Sub-Group, with responsibility for co-ordinating the production of the consortium's Annual Report. At a local level, Pete has been the chair for the Canterbury Circle of Libraries, a local consortium of public, HE, FE, school and special libraries within the Canterbury district.



Kitty Inglis

Librarian, University of Sussex and Chair of the Content Strategy Group

Kitty has over 30 years' experience in a wide range of academic libraries, the last 18 of which have been at a senior managerial level. Her professional interests are wide ranging and include content, open scholarship, customer service, leadership development and elearning. Elected to the SCONUL Board in June 2012, she is Chair of the Content Strategy Group. Kitty represents SCONUL on the UKRR Board and on the UUK Open Access Co-ordination Group. She has served on the Steering Group of the M25 Consortium of Academic Libraries, is a member of the EDINA Board and is Chair of the Mass Observation Archive Trust.



Alison Baud

Director of Library and Learning Services, Bath Spa University and Chair of the Leadership Task and Finish Group

Alison Baud has been Director of Library and Learning Services at Bath Spa University since 2008 and is a member of various key committees including the Senior Management Team and the Academic Board. Previously she spent seven years as a member of the Library Management Team at the University of Bath and before that was involved in the establishment of the Saïd Business School at the University of Oxford, leading particularly on the design of the library and

learning spaces. Her career began in corporate libraries, including seven years at British Aerospace, during which time she chaired the CILIP Aerospace and Defence Librarians' Group.

Alison is strongly committed to cross-sectoral and collaborative initiatives, particularly in the World Heritage City of Bath, working with libraries, museums and art galleries to raise awareness of their collections. She chairs the South West Higher Education Librarians network (SWHELs).

A graduate of the University of Aberdeen, Alison has been a chartered librarian for thirty years.



Judith Keene

University Librarian, University of Worcester and Vice-Chair of the Transformation Strategy Group

After a PhD in Palaeoecology, Judith Keene started her librarianship career at the University of Birmingham and Birmingham City University before moving to the University of Worcester. Her current role (since 2012) is that of University Librarian and a member of the University Executive. She was involved from the outset in the Hive project and has published and given many talks on the subject. The challenges of running a joint library, in partnership with Worcestershire County Council, whilst meeting the developing needs of the University

community mean that life is seldom dull.

Judith helped revive the West Midlands branch of what was then the Universities, Colleges and Research libraries group of CILIP and served as Chair for three years. Currently, she is particularly interested in how libraries can demonstrate their impact. She has been a school governor for over 10 years and is a lay minister in the Church of England.


Delegates

alphabetically by surname

Name	Job title	Organisation
Bethan Adams	Head of Library and Academic Support Services	University of Hertfordshire
Emma Adamson	Director of Learning Services	University of South Wales
Rufus Aguele	Sales Manager	Bruynzeel Storage Systems Ltd
Andrejs Alerfovs	Managing Director	Kortext
James Anthony-Edwards	Associate University Librarian	University of Salford
Pedr ap Llwyd	Cyfarwyddwr/Director	Llyfrgell Genedlaethol Cymru/National Library of Wales
David Archer	Head of Library and Archives Service	London School of Hygiene and Tropical Medicine
Robert Atkinson	Director of Library Services	Birkbeck, University of London
Lori Bailey	Head of Policy and Member Engagement	SCONUL
Andrew Barker	Head of Academic Liaison and Heritage Collections	University of Liverpool
Nick Barratt	Associate Director, Collections and Engagement	University of London
Alison Baud	Director of Library and Learning Services	Bath Spa University
Simon Bevan	University Librarian	Cranfield University
Robert Bley	Managing Director	Ex Libris
Debbi Boden-Angell	Director of Information Services	York St John University
Phil Brabban	University Librarian and Group Director of Learning Resources	Coventry University
Jason Briddon	Director of Library Services	UWE Bristol
Paul Brooks	Sales Manager	Bruynzeel Storage Systems Ltd
Paul Burchett	Managing Director	Telepen
Maria Carnegie	Library and Learner Support Manager, Learning Enhancement	University of Derby
Colin Carter	Director, Library Engagement	Innovative
Lesley Castens	Head of Library and Information Services	University of Gloucestershire

CAPITA

SCONUL 



Discover more...

Give your users the full picture with Library Search

Today's library users expect to have everything a library has to offer at their fingertips.

Introducing Library Search from Capita: enhancing the discovery experience

Now, by widening the net but narrowing the search, Library Search takes the unearthing of often inaccessible and under-utilised resources, such as archives and historical records, to the next level by providing a single search box that enables users to discover everything the library has to offer.



Discover **Library Search** in Calon 2 at the SCONUL Summer Conference 2016

Come to **Calon 2** at the **SCONUL Summer Conference and AGM 2016** on **22-24 July** in **Cardiff** and meet the Capita Libraries team. You can learn all about Library Search and discover more about our suite of software solutions for academic, public, national and specialist libraries.

If you can't make the conference, you can still discover Library Search for yourself by downloading one of our full library discovery briefing reports. Dedicated to the precise needs of both academic and public libraries, there's two to choose from...

Simply visit: www.capita-software.co.uk/librarysearch

Name	Job title	Organisation
Alison Chojna	Head of Library and Learning Resources	London South Bank University
Pat Christie	Director of Libraries and Academic Support Services	University of the Arts London
David Clay	Interim University Librarian	University of Salford
Jan Conway	Director of Library and Student Services	University for the Creative Arts
Ian Corns	Account Sales Manager	Talis Education Ltd
Robert Curry	Head of Academic Development and Delivery	Oxford Brookes University
Sue David	Head of Library and Learning Services	St George's, University of London
Helen Davies	Head of Library Services	Royal Central School of Speech and Drama
Mary Dawson	Head of Library Services	Sheffield Hallam University
Paul Dibble	Sales Manager	Talis Education Ltd
Andy Duck	Head of Marketing and Communications	Bruynzeel Storage Systems Ltd
Mary Dundon	Head, Reader Services	University of Limerick
Joanne Dunham	Head of Collections and Information Systems	University of Leicester
Liam Earney	Director of Jisc Collections	Jisc
Yaz El Hakim	Head of UK Academic Partnerships	RefME
Regina Everitt	Assistant Director (Customer Services and Operations)	SOAS University of London
Alexandra Follett	Key Account Manager	Ex Libris
Ian Forshaw	Chief Operating Officer	RefME
Christine Fowler	Head of Library Services and University Librarian	Bournemouth University
Leigh Garrett	Director, Centre for Digital Scholarship	University for the Creative Arts
Tracy Goodwin	Commercial Manager	Rackline
Robin Green	Librarian	University of Warwick

Name	Job title	Organisation
Kay Grieves	Quality & Marketing Manager	University of Sunderland
Neil Grindley	Head of Resource Discovery	Jisc
Andrew Hall	Sales Manager - UK and Ireland	OCLC
Roisin Gwyer	University Librarian	University of Portsmouth
Robert Hall	Director of Library Services	King's College London
Louise Hammond	Librarian	University of Buckingham
Alison Harding	Head of Library and Learning Resources	University of Wales Trinity Saint David
June Hayles	Interim Head of Library	Queen Mary University of London
Tricia Heffernan	Acting Director, Library Services	The Open University
Libby Homer	Director of Library and Learning Services	University of East London
Sue House	Librarian for Law, Accounting and Finance	University of South Wales
Grace Hudson	Head of Library Services	University of Bradford
Kitty Inglis	Librarian	University of Sussex
Ruth Jenkins	Head of Library Services	Manchester Metropolitan University
Diane Job	Director of Library Services	University of Birmingham
Liz Jolly	Director of Library and Information Services	Teesside University
Chris Jones	Account Manager	OCLC
Jenny Jones	Librarian, Head of Customer Services	Cardiff Metropolitan University
Chris Keene	Head of Library and Scholarly Futures	Jisc
Judith Keene	University Librarian	University of Worcester
Paula Keogh	Sales Manager	Capita
Veronica Lawrence	Librarian	Goldsmiths, University of London
Alison Little	Associate Director - Learning Strategy and Student Engagement	University of Sheffield
Rosemary Lynch	Director of Collection Care	Tate

Name	Job title	Organisation
Alison Mackenzie	Dean of Learning Services	Edge Hill University
Martina McChrystal	Deputy Director / Head of Academic Engagement	University of Glasgow
Kathryn McGowan	Contract Director	Reassurance Security Services Ltd
Claire McGowan	Account Manager	Reassurance Security Services Ltd
Cath Morgan	Assistant Director, Information Services	University of Brighton
Martin Moyle	Assistant Director	University College London
Julie Neenan	Librarian: Head of Technical Services	Cardiff Metropolitan University
SitMui Ng	SCONUL Co-ordinator	SCONUL
Jo Norry	Director of Libraries and Learning Innovation	Leeds Beckett University
Fiona O'Brien	Academic Liaison Manager	University of Westminster
Elizabeth Oddy	Learning and Research Support Services	Newcastle University
Lowri Owen	Information Librarian, Business School	University of South Wales
Barbara Pacut	Director, EMEA Sales	SirsiDynix
Andy Panayiotou	Account Manager	SirsiDynix
Fiona Parsons	Director of Academic Support	University of Wolverhampton
Richard Parsons	CIO, Director of Library and Learning Centre and University Librarian	University of Dundee
Janet Peden	University Librarian	Ulster University
Richard Penning	Regional Sales Manager	Rackline
Janet Peters	Director of University Libraries and University Librarian	Cardiff University
Catherine Phillpotts	Director of Library Services and Special Collections	London Metropolitan University
Doreen Pinfold	Director of Library and Academic Skills	Falmouth Exeter Plus/Falmouth University
Chris Porter	Director of Library and Learning Services	Newman University

Kortext

A quick question...

Can your university track how its students are engaging with course content?

Kortext leads the way by working with universities around the UK to develop a learning solution that empowers students and enhances the learning experience. Powerful insights into usage data can help your university drive student engagement and progression – a far cry from being just another etextbook reader!

Share your answer with us in Calon Lobby

The team will be on hand to answer any questions and take you through a quick demo of the UK's leading digital textbook platform.



✉ info@kortext.com
☎ +44 (0)1202 551203



www.kortext.com

Name	Job title	Organisation
Clare Powne	Head of Library and Culture Services	University of Exeter
Christopher Pressler	University Librarian	Dublin City University
Dave Puplett	Drill Hall Library Manager	University of Greenwich
Paul Reynolds	University Librarian	Keele University
Adam Rhodes	Regional Sales Manager	ProQuest
Joanne Richardson	Field Sales Executive	Gale, Cengage Learning
John Robinson	Director of Library and Information Services	SOAS University of London
Caroline Rock	Director of Library and Learning Support Services	University of Surrey
Ann Rossiter	Executive Director	SCONUL
Pete Ryan	Director of Library and Learning Resources	Canterbury Christ Church University
Louise Savage	Strategy and Business Change Manager	University of Nottingham
Martin Scarrott	Director of Library and Learning Technology	St Mary's University, Twickenham
Andrew Simpson	Associate University Librarian	University of Portsmouth
Kevin Sontag	Product Manager	Telepen
Hannah South	Head of Library Academic Services	University of Bath
Tracey Stanley	Deputy Librarian	Cardiff University
Jane Stephenson	Associate Director (Students Education and Skills)	University of Southampton
Catherine Strong	Sales Account Manager	Innovative
Georgia Stroud	Administrator	SCONUL
Milan Thakur	Account Manager	ProQuest
Mark Toole	Head of Libraries and Learning Resources	Nottingham Trent University
John Tuck	Director of Library Services	Royal Holloway, University of London

Name	Job title	Organisation
Denise Turner	Assistant Director, Learning and Research Support and Customer Services	Teesside University
Anna Vernon	Jisc Collections Service Manager	Jisc
Michelle Wake	Librarian, UCL School of Pharmacy and Site Libraries Manager	University College London
Tim Wales	Director of Library Services	University of West London
Catherine Walsh	Director of Library Services and University Librarian	University of Essex
Chris Wanley	Director of IT and Library Services	Aston University
Kevin Watt	Business Development Director	Kortext
Michael Webb	Senior Developer	Jisc
Sue White	Director of Computing and Library Services	University of Huddersfield
Rachael Whitfield	Development Officer	WHELP
Steve Williams	University Librarian and Head of Libraries, Archives	Swansea University
Michael Williams	Head of Storage and Logistics	University of Oxford
Ann Williams	Senior Library Assistant	Cardiff University
Steve Wilson-Copp	Account Manager	Capita
Jock Wright	Global Head of Partnerships	RefME

Welcome drinks reception

For delegates arriving in Cardiff the evening before the conference, there will be a drinks reception between 6.30pm and 8.00pm. This is a relatively informal event where dress will be smart-casual or business attire. Please feel free to attend for as long as it suits your travel and other arrangements.

The reception is being held in the Caernarfon suite at the Mercure Cardiff Holland House Hotel. There will a selection of hot and cold canapés served, with wine and soft drinks available.



Informal dinner arrangements

We will also be arranging a series of informal groups to head off to local restaurants following the reception. If you're interested in joining one of these, please make yourself known to a member of SCONUL staff at the reception or beforehand, and we will make sure that you are included.

Conference dinner

The conference dinner is being held at the National Museum Cardiff, Cathays Park, Cardiff CF10 3NP which is a short walk from the conference hotel (of approximately 10 minutes).

Dinner will be accompanied by music from the Allard-Wong Duo

Arrangements for dinner	
18.30	Gather in the Calon Lobby of the conference hotel to walk to the National Museum Cardiff
19.00	Pre-dinner drinks, Historic Galleries, National Museum Cardiff
19.50	Move into The Grand Hall for dinner
22.00 - 22.30	Close

We are very grateful to RefME for their kind sponsorship which has made this event possible.



RefME

Dinner menu

Starter

*Welsh ham hock rillettes with piccalilli, sour dough toast
Pea and watercress soup with savoury herb eclairs (v)*

Main Course

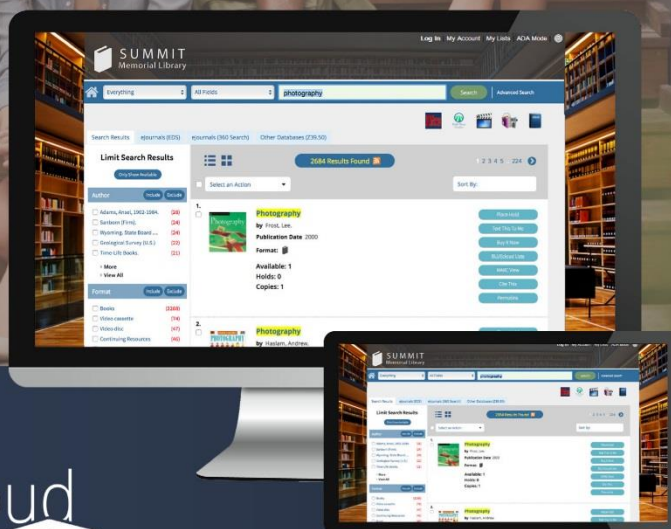
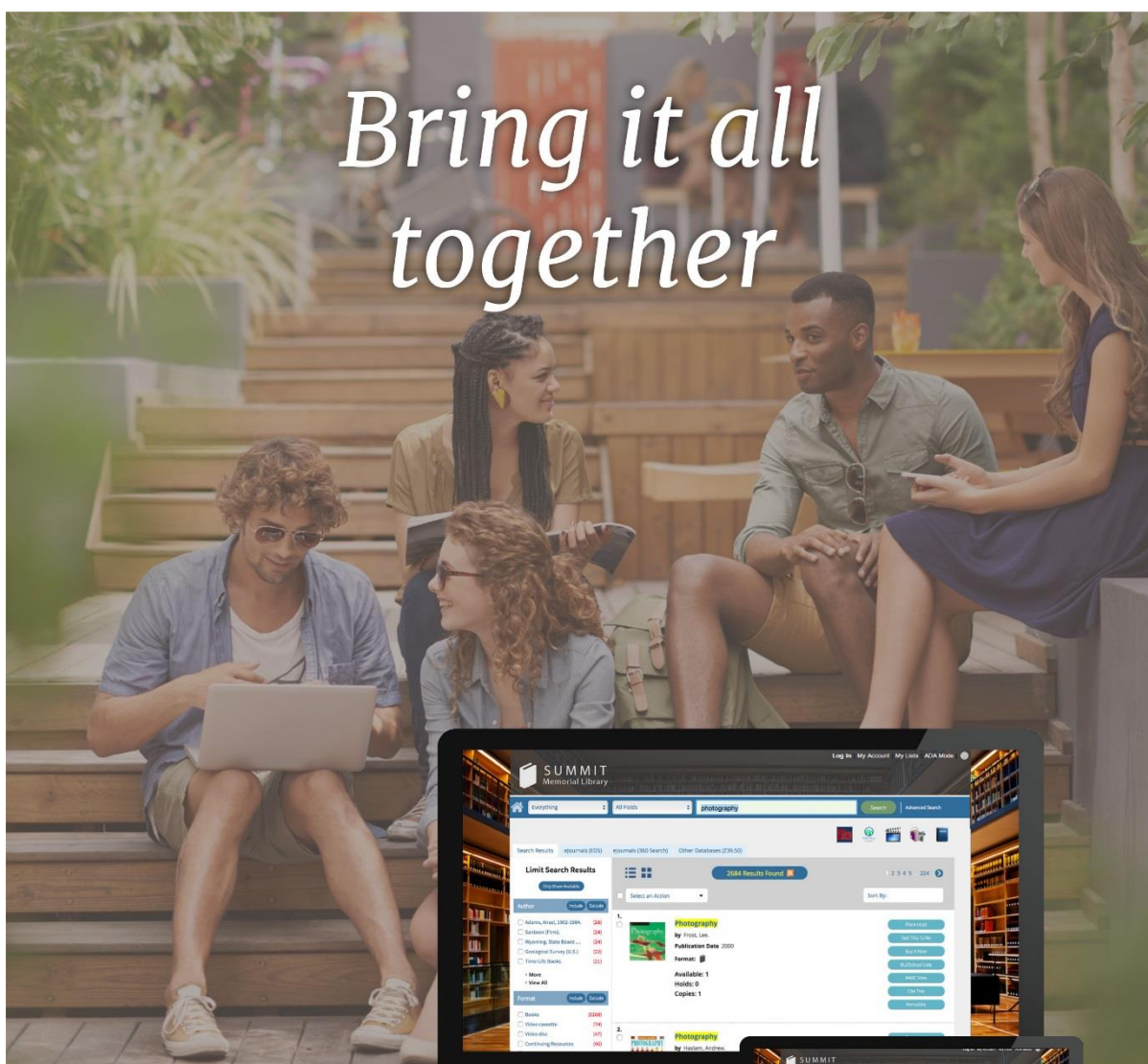
*Roast chicken breast with apricot and watercress stuffing
Twice baked Pwll Mawr cheddar cheese soufflé (v)*

Dessert

Iced nougat and Brecon honey parfait with seasonal berries



Bring it all together



With BLUEcloud Campus, give your students one place to do all their research: your online catalogue. Create the ideal academic experience by integrating scholarly databases, managing your physical and digital resources, and designing efficient workflows—with all the benefits of the cloud.



To learn more, visit sirsiDynix.com/bluecloud or call our office at +44 (0) 1923 202901.

Parallel sessions

Thursday 23 June 14.00hrs and Friday 24 June, 13.30hrs

Topic	Outline	Location
<p>Embracing public engagement in libraries</p> <p>Charlotte Haigh, Associate Professor in Human Physiology and Academic Lead for Public Engagement with Research, School of Biomedical Sciences, University of Leeds</p>	<p>Public engagement describes the myriad of ways in which the activity and benefits of higher education and research can be shared with the public. Engagement is by definition a two-way process, involving interaction and listening, with the goal of generating mutual benefit. This enriches the institution's research, teaching and learning. In this session, public engagement at a national level will be presented alongside the role of the National Coordinating Centre for Public Engagement (NCCPE). The rest of the session will be used to view and discuss examples and case studies of community engaged research which has taken place in the higher education sector and the role libraries can have in facilitating this research.</p>	<p>Pembroke Third floor</p>
<p>Research data management in the arts and humanities: a few difficulties</p> <p>Martin Donnelly, Senior Institutional Support Officer, Digital Curation Centre</p>	<p>Research data management (RDM) is frequently defined as "the active management and appraisal of data over the lifecycle of scholarly and scientific interest", and policy-driven expectations to archive, link and share the data underpinning scholarly publications are increasingly becoming 'the new normal'. The drivers behind this shift, and indeed the definition given above, tend to be quite science-centric, to the extent that in some circles the terms 'research' and 'science' are used almost interchangeably. This, alongside other terminological problems such as the use of 'data' as shorthand for a broad range of quantitative and non-quantitative research objects, can serve to alienate those working in the Arts and Humanities. This session will explore some of the problems inherent in treating all research observations as 'data' and will include an opportunity for attendees to consider the policy environment within which their own institutions operate.</p>	<p>Kidwelly Second floor</p>

Topic	Outline	Location
<p>WHELF shared LMS: looking back and looking forward</p> <p>Gareth Owen, Programme Manager, WHELF Shared LMS</p>	<p>By September this year, the nine universities in Wales, the National Library of Wales and the NHS Libraries in Wales, represented by the Wales Higher Education Libraries Forum (WHELF), will all be live with the same cloud hosted next generation library management system and discovery layer - Ex Libris Alma and Primo.</p> <p>This is a timely opportunity to reflect on this ambitious and ground-breaking WHELF project, the 'outstanding library team' winner at the 2015 Times Higher Education Leadership and Management Awards. It will also provide an opportunity to look forward and explore the opportunities for deeper and wider collaboration enabled by having a shared library management system, including how benefits realisation is being embedded into the project.</p>	<p>Caerphilly Third floor</p>
<p>Making collaboration work - a theoretical and practical consideration of the requirements for library collaborations to be successful and sustained</p> <p>Richard Parsons, CIO, Director of Library and Learning Centre and University Librarian, University of Dundee</p> <p>Tracey Stanley, Deputy Librarian and Assistant Director, Cardiff University</p>	<p>Guided by the SCONUL Collaboration Strategy Group, a toolkit has been prepared to permit the future development of library collaborations, ensuring that they can benefit from recognisable components that contribute to collaboration success. The toolkit identifies a series of elements and considers these in relation to an academic analysis (such as the theory of collaborative advantage) and a practical consideration of collaboration delivery. The workshop will be composed of a brief presentation of the toolkit, two examples of recent collaborations that can be calibrated within the toolkit (SHEDL and WHELF LMS), and contributions and considerations of the session participants to both engage with, and further enhance, the toolkit. The session will be of interest to those currently involved in, or planning to be involved in, regional or national collaborations.</p>	<p>Brecon Second floor</p>

Thursday 23 June

Embracing public engagement in libraries

Pembroke, third floor

Charlotte Haigh, Associate Professor in Human Physiology and Academic Lead for Public Engagement with Research, School of Biomedical Sciences, University of Leeds

Name	Job Title	Institution
James Anthony-Edwards	Associate University Librarian	University of Salford
Pedr ap Llwyd	Cyfarwyddwr/Director	Llyfrgell Genedlaethol Cymru/National Library of Wales
David Archer	Head of Library and Archives Service	London School of Hygiene and Tropical Medicine
Andrew Barker	Head of Academic Liaison and Heritage Collections	University of Liverpool
Maria Carnegie	Library and Learner Support Manager, Learning Enhancement	University of Derby
Pat Christie	Director of Libraries and Academic Support Services	University of the Arts London
Sue David	Head of Library and Learning Services	St George's, University of London
Mary Dawson	Head of Library Services	Sheffield Hallam University
Andy Duck	Head of Marketing and Communications	Bruynzeel Storage Systems Ltd
Mary Dundon	Head, Reader Services	University of Limerick
Alexandra Follett	Key Account Manager	Ex Libris
Louise Hammond	Librarian	University of Buckingham
Libby Homer	Director of Library and Learning Services	University of East London
Kitty Inglis	Librarian	University of Sussex
Judith Keene	University Librarian	University of Worcester
Martina McChrystal	Deputy Director / Head of Academic Engagement	University of Glasgow
Janet Peden	University Librarian	Ulster University
Clare Powne	Head of Library and Culture Services	University of Exeter
Adam Rhodes	Regional Sales Manager	ProQuest
Martin Scarrott	Director of Library and Learning Technology	St Mary's University, Twickenham
Anna Vernon	Jisc Collections Service Manager	Jisc

Name	Job Title	Institution
Michelle Wake	Librarian, UCL School of Pharmacy and Site Libraries Manager	University College London
Catherine Walsh	Director of Library Services and University Librarian	University of Essex
Sue White	Director of Computing and Library Services	University of Huddersfield

Research data management in the arts and humanities: a few difficulties

Kidwelly, second floor

Martin Donnelly, Senior Institutional Support Officer, Digital Curation Centre

Name	Job Title	Institution
Alison Baud	Director of Library and Learning Services	Bath Spa University
Phil Brabban	University Librarian and Group Director of Learning Resources	Coventry University
David Clay	Interim University Librarian	University of Salford
Regina Everitt	Assistant Director (Customer Services and Operations)	SOAS University of London
Christine Fowler	Head of Library Services and University Librarian	Bournemouth University
Kay Grieves	Quality & Marketing Manager	University of Sunderland
Ruth Jenkins	Head of Library Services	Manchester Metropolitan University
Diane Job	Director of Library Services	University of Birmingham
Veronica Lawrence	Librarian	Goldsmiths, University of London
Cath Morgan	Assistant Director, Information Services	University of Brighton
Martin Moyle	Assistant Director	University College London
Jo Norry	Director of Libraries and Learning Innovation	Leeds Beckett University
Andy Panayiotou	Account Manager	SirsiDynix
Janet Peters	Director of University Libraries and University Librarian	Cardiff University
Catherine Phillpotts	Director of Library Services and Special Collections	London Metropolitan University
Chris Porter	Director of Library and Learning Services	Newman University
Christopher Pressler	University Librarian	Dublin City University
Caroline Rock	Director of Library and Learning Support Services	University of Surrey
Louise Savage	Strategy and Business Change Manager	University of Nottingham
Milan Thakur	Account Manager	ProQuest



See live demos
in the Calson Lobby

Gale's newspaper archives provide an alternative voice for researchers



Cross-search Gale's many newspaper archives and much more in the *Gale Primary Sources* environment using all the platform's cutting edge features including detailed subject indexing, data visualisation and workflow tools enabling the analysis of data in entirely new ways.



Featured: The Telegraph Historical Archive, 1855-2000 | Daily Mail Historical Archive 1896-2004 | The Independent Digital Archive, 1986-2012

with Tools & Features to take your research to the next level!

Term Frequency • Term Clusters • Subject Indexing
• User Accounts • Zotero Compatibility

Gale's newspaper archives are multi-disciplinary resources relevant to the fields of: History, Politics, English Studies, Business, Journalism, Science and Philosophy to name a few.



Request your free institutional trial today!

Today in the Calson Lobby; email emea.galereply@cengage.com
or visit gale.cengage.co.uk/newsvault

WHELF shared LMS: looking back and looking forward

Caerphilly, third floor

Gareth Owen, Programme Manager, WHELF Shared LMS

Name	Job Title	Institution
Robert Bley	Managing Director	Ex Libris
Joanne Dunham	Head of Collections and Information Systems	University of Leicester
Yaz El Hakim	Head of UK Academic Partnerships	RefME
Leigh Garrett	Director, Centre for Digital Scholarship	University for the Creative Arts
Andrew Hall	Sales Manager - UK and Ireland	OCLC
Chris Jones	Account Manager	OCLC
Paula Keogh	Sales Manager	Capita
Julie Neenan	Librarian: Head of Technical Services	Cardiff Metropolitan University
Dave Puplett	Drill Hall Library Manager	University of Greenwich
Paul Reynolds	University Librarian	Keele University
Joanne Richardson	Field Sales Executive	Gale, Cengage Learning
John Robinson	Director of Library and Information Services	SOAS University of London
Pete Ryan	Director of Library and Learning Resources	Canterbury Christ Church University
Andrew Simpson	Associate University Librarian	University of Portsmouth
Mark Toole	Head of Libraries and Learning Resources	Nottingham Trent University
Steve Wilson-Copp	Account Manager	Capita



Secure Room Booking



- RB2 provides an enhanced student booking experience
- RB2 provides clear indications of room availability
- RB2 is compatible with Magnetic Stripe, RFID or Barcoded Cards

TELEPEN

IMPROVING THE
LIBRARY EXPERIENCE

For more information, call: **01582 769991**
or visit: **www.telepen.co.uk**

SB Electronic Systems Ltd
Arden Grove
Harpenden
Hertfordshire
AL5 4SL

Making collaboration work - a theoretical and practical consideration of the requirements for library collaborations to be successful and sustained

Brecon, second floor

Richard Parsons, CIO, Director of Library and Learning Centre and University Librarian, University of Dundee

Tracey Stanley, Deputy Librarian and Assistant Director, Cardiff University

Name	Job Title	Institution
Emma Adamson	Director of Learning Services	University of South Wales
Robert Atkinson	Director of Library Services	Birkbeck, University of London
Simon Bevan	University Librarian	Cranfield University
Debbi Boden-Angell	Director of Information Services	York St John University
Jason Briddon	Director of Library Services	UWE Bristol
Lesley Castens	Head of Library and Information Services	University of Gloucestershire
Alison Chojna	Head of Library and Learning Resources	London South Bank University
Jan Conway	Director of Library and Student Services	University for the Creative Arts
Robert Curry	Head of Academic Development and Delivery	Oxford Brookes University
Helen Davies	Head of Library Services	Royal Central School of Speech and Drama
Ian Forsheew	Chief operating Officer	RefME
Robin Green	Librarian	University of Warwick
Neil Grindley	Head of Resource Discovery	Jisc
Roisin Gwyer	University Librarian	University of Portsmouth
Alison Harding	Head of Library and Learning Resources	University of Wales Trinity Saint David
June Hayles	Interim Head of Library	Queen Mary University of London
Tricia Heffernan	Acting Director, Library Services	The Open University
Grace Hudson	Head of Library Services	University of Bradford
Liz Jolly	Director of Library and Information Services	Teesside University
Alison Mackenzie	Dean of Learning Services	Edge Hill University
Fiona O'Brien	Academic Liaison Manager	University of Westminster
Elizabeth Oddy	Learning and Research Support Services	Newcastle University
Doreen Pinfold	Director of Library and Academic Skills	Falmouth Exeter Plus/Falmouth University

Name	Job Title	Institution
Hannah South	Head of Library Academic Services	University of Bath
Jane Stephenson	Associate Director (Students Education and Skills)	University of Southampton
John Tuck	Director of Library Services	Royal Holloway, University of London
Denise Turner	Assistant Director, Learning and Research Support and Customer Services	Teesside University
Tim Wales	Director of Library Services	University of West London
Michael Williams	Head of Storage and Logistics	University of Oxford
Jock Wright	Global Head of Partnerships	RefME

Friday 24 June

Embracing public engagement in libraries

Pembroke, third floor

Charlotte Haigh, Associate Professor in Human Physiology and Academic Lead for Public Engagement with Research, School of Biomedical Sciences, University of Leeds

Name	Job Title	Institution
Emma Adamson	Director of Learning Services	University of South Wales
Nick Barratt	Associate Director, Collections and Engagement	University of London
David Clay	Interim University Librarian	University of Salford
Robert Curry	Head of Academic Development and Delivery	Oxford Brookes University
Liam Earney	Director of Jisc Collections	Jisc
Yaz El Hakim	Head of UK Academic Partnerships	RefME
Leigh Garrett	Director, Centre for Digital Scholarship	University for the Creative Arts
June Hayles	Interim Head of Library	Queen Mary University of London
Tricia Heffernan	Acting Director, Library Services	The Open University
Grace Hudson	Head of Library Services	University of Bradford
Jenny Jones	Librarian, Head of Customer Services	Cardiff Metropolitan University
Janet Peters	Director of University Libraries and University Librarian	Cardiff University
Catherine Phillpotts	Director of Library Services and Special Collections	London Metropolitan University
Andrew Simpson	Associate University Librarian	University of Portsmouth
Jane Stephenson	Associate Director (Students Education and Skills)	University of Southampton

University of East Anglia scales access to online learning materials to meet higher student demand with Talis

Highlights:

- Live for 12 months
- 800+ lists in the system (50-60% coverage)
- 20% increase in scans in just one month
- Reading lists centralised in Talis Aspire Reading Lists, now considered core library service

Ed comments, 'The system has been very well received across the whole university community. We've helped this process by promoting it to the academic audience at every single opportunity, to every school and committee, to help push the system out there.'

The business case for Talis Aspire Reading Lists and Digitised Content focused on delivering:

- Higher volumes of online learning materials to meet increasing student demand.
- A sustainable and scalable way to support the whole university community in online learning.
- Integration of Reading Lists with Blackboard as a single centralised resource hub.
- Online copyright clearance functionality to increase the number of scans offered.
- A catalyst for change in teaching practices and a driver for promoting online learning resources.

'Marrying up digitised content with reading lists was a natural solution to improving access to online learning environments, thereby improving the student experience.'

Ed Chamberlain Head of Resources, University of East Anglia

Talis helps universities in eight countries, including over 50% of all UK universities, manage and deliver learning resources online.

Key stats:

- Nearly **500K** reading lists hosted
- Over **20million** references
- Over **176million** views of reading lists by students each year
- **100%** renewals

Visit our stand to find out how we can support you in influencing and leading the Teaching and Learning strategy at your institution.

 talis.com
 [@talis](https://twitter.com/talis)

talis

Research data management in the arts and humanities: a few difficulties

Kidwelly, second floor

Martin Donnelly, Senior Institutional Support Officer, Digital Curation Centre

Name	Job Title	Institution
Robert Atkinson	Director of Library Services	Birkbeck, University of London
Lesley Castens	Head of Library and Information Services	University of Gloucestershire
Alison Chojna	Head of Library and Learning Resources	London South Bank University
Alexandra Follett	Key Account Manager	Ex Libris
Ian Forshew	Chief Operating Officer	RefME
Robin Green	Librarian	University of Warwick
Roisin Gwyer	University Librarian	University of Portsmouth
Louise Hammond	Librarian	University of Buckingham
Alison Harding	Head of Library and Learning Resources	University of Wales Trinity Saint David
Liz Jolly	Director of Library and Information Services	Teesside University
Alison Mackenzie	Dean of Learning Services	Edge Hill University
Fiona O'Brien	Academic Liaison Manager	University of Westminster
Elizabeth Oddy	Learning and Research Support Services	Newcastle University
Adam Rhodes	Regional Sales Manager	ProQuest
Martin Scarrott	Director of Library and Learning Technology	St Mary's University, Twickenham
Hannah South	Head of Library Academic Services	University of Bath
Mark Toole	Head of Libraries and Learning Resources	Nottingham Trent University
John Tuck	Director of Library Services	Royal Holloway, University of London
Denise Turner	Assistant Director, Learning and Research Support and Customer Services	Teesside University
Sue White	Director of Computing and Library Services	University of Huddersfield
Jock Wright	Global Head of Partnerships	RefME



Knowledge

connects the dots

The greatest breakthroughs happen when knowledge is shared, giving thinkers and dreamers a clear view of each other's ideas. When OCLC member libraries share their collective resources, ground-breaking ideas aren't merely possible—they're inevitable.

Because what is known must be shared.SM

Learn more at oclc.org/share
Contact us at uk@oclc.org



WHELF shared LMS: looking back and looking forward

Caerphilly, third floor

Gareth Owen, Programme Manager, WHELF Shared LMS

Name	Job Title	Institution
Pedr ap Llwyd	Cyfarwyddwr/Director	Llyfrgell Genedlaethol Cymru/National Library of Wales
Jason Briddon	Director of Library Services	UWE Bristol
Jan Conway	Director of Library and Student Services	University for the Creative Arts
Regina Everitt	Assistant Director (Customer Services and Operations)	SOAS University of London
Neil Grindley	Head of Resource Discovery	Jisc
Andy Panayiotou	Account Manager	SirsiDynix
Doreen Pinfold	Director of Library and Academic Skills	Falmouth Exeter Plus/Falmouth University
Chris Porter	Director of Library and Learning Services	Newman University
Milan Thakur	Account Manager	ProQuest
Tim Wales	Director of Library Services	University of West London
Michael Webb	Senior Developer	Jisc
Michael Williams	Head of Storage and Logistics	University of Oxford

Meet us in
Calon 2

Powering Researchers and their Libraries

proquest.com



ProQuest®

Making collaboration work - a theoretical and practical consideration of the requirements for library collaborations to be successful and sustained

Brecon, second floor

Richard Parsons, CIO, Director of Library and Learning Centre and University Librarian, University of Dundee

Tracey Stanley, Deputy Librarian and Assistant Director, Cardiff University

Name	Job Title	Institution
James Anthony-Edwards	Associate University Librarian	University of Salford
David Archer	Head of Library and Archives Service	London School of Hygiene and Tropical Medicine
Robert Bley	Managing Director	Ex Libris
Debbi Boden-Angell	Director of Information Services	York St John University
Phil Brabban	University Librarian and Group Director of Learning Resources	Coventry University
Maria Carnegie	Library and Learner Support Manager, Learning Enhancement	University of Derby
Pat Christie	Director of Libraries and Academic Support Services	University of the Arts London
Mary Dawson	Head of Library Services	Sheffield Hallam University
Andy Duck	Head of Marketing and Communications	Bruynzeel Storage Systems Ltd
Joanne Dunham	Head of Collections and Information Systems	University of Leicester
Christine Fowler	Head of Library Services and University Librarian	Bournemouth University
Kay Grieves	Quality & Marketing Manager	University of Sunderland
Andrew Hall	Sales Manager - UK and Ireland	OCLC
Kitty Inglis	Librarian	University of Sussex
Ruth Jenkins	Head of Library Services	Manchester Metropolitan University
Diane Job	Director of Library Services	University of Birmingham
Chris Jones	Account Manager	OCLC
Judith Keene	University Librarian	University of Worcester
Paula Keogh	Sales Manager	Capita
Veronica Lawrence	Librarian	Goldsmiths, University of London
Martina McChrystal	Deputy Director / Head of Academic Engagement	University of Glasgow
Jo Norry	Director of Libraries and Learning Innovation	Leeds Beckett University

EVERY PICTURE TELLS A STORY



MOBILE, STATIC & LIBRARY SHELVING & PICTURE RACKING

At universities in Leeds, London, Lancaster and Liverpool;
in Hull and Hertfordshire, in Oxford and Cambridge, in Essex
and Edinburgh, in Manchester, in Birmingham, in Newcastle...

ECOSPACE

Mobile, static & library shelving systems

t 01869 278002 www.ecospace.co.uk
e info@ecospace.co.uk

Name	Job Title	Institution
Janet Peden	University Librarian	Ulster University
Clare Powne	Head of Library and Culture Services	University of Exeter
Christopher Pressler	University Librarian	Dublin City University
Dave Puplett	Drill Hall Library Manager	University of Greenwich
John Robinson	Director of Library and Information Services	SOAS University of London
Caroline Rock	Director of Library and Learning Support Services	University of Surrey
Louise Savage	Strategy and Business Change Manager	University of Nottingham
Michelle Wake	Librarian, UCL School of Pharmacy and Site Libraries Manager	University College London
Catherine Walsh	Director of Library Services and University Librarian	University of Essex

Fringe

Thursday 23 June, 15.10

Speakers	What's it all about	Location
Jisc Collections Fringe		
Update on Jisc Collections 2016 negotiations for journals and textbooks		
Liam Earney Director of Jisc Collections Anna Vernon Jisc Collections Service Manager	This year Jisc Collections is undertaking a number of major negotiations with journal and textbook publishers. In this session Liam Earney and Anna Vernon will give an update on the progress of negotiations and provide an opportunity for delegates to ask questions and input to the ongoing negotiation process.	Pembroke Third floor
SCONUL Fringe		
An out-of-hours virtual enquiry service for SCONUL members		
John Tuck Director of Library Services, Royal Holloway University of London and Chair of the Collaboration Strategy Group Liz Jolly Director of Library and Information Services, Teesside University Ann Rossiter Executive Director, SCONUL Jo Norry Director of Libraries and Learning Innovation, Leeds Beckett University Sue White Director of Computing and Library Services, University of Huddersfield Andrew Hall Sales Manager – UK and Ireland, OCLC	SCONUL's Collaboration Strategy Group is working on the establishment of an out-of-hours virtual enquiry service for members, based on the model currently in operation among members of the Northern Collaboration consortium. This meeting will provide an opportunity for members to find out more about the proposal, to hear from directors who are currently using the service, and to discuss opportunities and challenges.	Brecon Second floor

Speakers	What's it all about	Location
RefME Fringe		
Citation-data-informed decision making		
Yaz El Hakim Head of UK Academic Partnerships, RefME	<p>Following a trend of substantial investments in 'Capital' projects across the HE sector, this session will seek to question whether such investments are being focused a) on library spaces and infrastructure and b) on physical or digital experiences of learners (discussing the aspects of inclusive learning environments and the exponential growth of online learning).</p> <p>We will briefly consider which (and if any) data sets are being used to make certain investment decisions, drawing on some high profile examples, where ambitions, strategy or irrelevant/irrational data has led interesting developments instead of trended data.</p> <p>The session will then draw in the potential of big data sets that have not been available previously, but with the rapid and high adoption of RefME in the UK (currently 800,000 UK users), such potential is being planned for in some RefME institutes. Such data may expedite the transformation and enhancement of experiences for staff and students, whilst creating deeper awareness and more personalised support for learners. The session will conclude by discussing the use of citation analytics, which will likely build into more granular learning analytics (e.g. Jisc Learner Analytics Service - in development), progressing the capability of such analytics beyond simply improving retention for institutions to improving the success of all learners in the future.</p>	Kidwelly Second floor
Ex Libris Fringe		
Giving the library and librarians a leading role in their institution, through workflow integration		
Robert Bley Managing Director, Ex Libris	Not available at time of going to press.	Caerphilly Third floor

Fringe

Friday 24 June, 12.00

Topic	What's it all about	Location
Jisc Fringe		
Transforming library management: building the case for a national bibliographic knowledgebase		
Neil Grindley Head of Resource Discovery, Jisc	<p>Jisc is working closely with SCONUL, RLUK and other strategic partners to specify and procure a new national-scale solution for more comprehensively aggregating and integrating library data with other sources of data. The rationale for pursuing a National Bibliographic Knowledgebase (NBK) is to provide new library collection management capability and to substantially increase prospects for digital access to monographs and other types of content for end-users. The current plan is ambitious and transformational in scope and is critically reliant on UK academic and specialist libraries agreeing to contribute data and to commit resources to sustain the NBK. This session will describe the proposed service, set out the emerging business case for participating libraries, explain the current timetable for implementation and then invite participants to discuss risks, requirements and expectations.</p>	Pembroke Third floor
Innovative Fringe		
What next for resource sharing?		
Colin Carter Director, Library Engagement, Innovative	<p>An international perspective on approaches to inter-lending, access to journals and shared collection management.</p> <p>Colin Carter will present on trends in resource sharing within the academic library community including discussion of inter-library lending practices, approaches to accessing print and electronic journals and articles and work that is being done around shared collection management.</p> <p>With growing pressures on budgets and changing demands for space, more and more university libraries around the world are getting involved in initiatives such as the National Monograph Strategy in the UK and projects in other parts of the world to implement shared remote storage facilities and resource sharing systems. Libraries are looking for innovative solutions that maintain access but reduce the costs of ensuring that their users have access to all of the print and electronic resources that they require. Examples will be presented and questions posed about the robustness and sustainability of these initiatives.</p>	Caerphilly Third floor

Topic	What's it all about	Location
SCONUL Fringe		
Leadership Lounge: the secret to success		
Alison Baud Director of Library and Learning Services, Bath Spa University and Chair of the Leadership Task and Finish Group	What qualities and attributes do academic library leaders need to be successful in the changing HE landscape? How do we future proof ourselves given the increasingly broad range of demands on libraries and their leaders? These are among the questions that the SCONUL Leadership Task Group is discussing as part of its remit to develop a range of initiatives to enhance the leadership capacity across our diverse sector. We want to know what is important to you as a leader and we want to know about you.	Kidwelly Second floor
Roisin Gwyer University Librarian, University of Portsmouth	What leadership development advice do you give to new, aspiring leaders? And what advice would you give your younger self?	
Lesley Castens Head of Library and Information Services, University of Gloucestershire	Drop in to the Leadership Lounge between 12 noon and 12.45 on Friday 24 th June to share your views and experience of leading and leadership development. What works well? What is needed? What should SCONUL do to support established and emerging leaders? This is a chance to chat informally over a cup of coffee and a piece of cake.	
Jo Norry Director of Libraries and Learning Innovation, Leeds Beckett University	Come along, join the conversation, and share your secret to success.	
Jisc Fringe		
Jisc digital futures: learning analytics and research data		
Chris Keene Head of Library and Scholarly Futures, Jisc	Jisc has an active R&D agenda, using our co-design visions to explore and develop ideas, and then scaling them up to benefit the sector. We will present an overview of how Jisc approaches innovation and develops new services, and works with the community to shape and prioritise our work. The session will focus on two key projects: learning analytics and the research data management shared service. Our learning analytics project is working with over 50 universities and colleges to build a service for the sector, to help institutions improve retention and attainment. With research data management, the pilot service will enable researchers to easily deposit data for publication, discovery, safe storage, long term archiving and preservation. The session aims to give participants a clear overview of Jisc's R&D pipeline, how it works and what it includes, and an understanding of these two key projects and related initiatives.	Brecon Second floor
Michael Webb Director of Technology and Analytics, Jisc		

Our sponsors

Bruynzeel Storage Systems

Bruynzeel is Europe's leading manufacturer of specialist storage systems. Its library and education service includes the design and installation of space saving mobile shelving, double decker systems, static library shelving, low-level units for book display and a range of archival solutions for special collections.

Our UK team specialises in the design of electronic mobile shelving for public and university libraries.

Bruynzeel is a Crown Commercial Service supplier. All our systems conform to PD5454:2012.

Clients include: Lambeth Palace Library; Library of Birmingham; Liverpool Central Library; University of Bedfordshire; University of Cambridge; University of Greenwich; University of Huddersfield (Heritage Quay); University of Sheffield; University of West London.

Find us in the Calon Lobby.

Capita

Capita is the market-leading library management software provider in the UK. Our software solutions, developed through close customer partnerships, are designed to deliver effective library services through configurable and innovative applications. Capita's core library management system (LMS) software enables libraries to manage the running of the library effectively and efficiently. To discover more, visit www.capita.co.uk/libraries, email libraries-enquiries@capita.co.uk or call 0870 400 5000.

Find us in Calon 2.



www.bruynzeel-storage.com

Elaine Witchell
Sales Support

Bruynzeel Storage Systems Ltd
Sheddingdean Business Park
Marchants Way
Burgess Hill
West Sussex RH15 8QY

E: enquiries@bruynzeel.co.uk
T: 0800 220 989



www.capita.co.uk

Capita
Knights Court
Solihull Parkway
Birmingham Business Park
Birmingham B37 7YB

E: libraries-enquiries@capita.co.uk
T: 0870 400 5000

Ex Libris

Ex Libris, a ProQuest company, is a leading global provider of cloud-based solutions for higher education. Offering SaaS solutions for the management and discovery of the full spectrum of library and scholarly materials, as well as mobile campus solutions driving student engagement and success, Ex Libris serves thousands of customers in 90 countries.

See us at our fringe meeting.



www.exlibrisgroup.com

Ex Libris (UK) Ltd.
5th Floor, 3 Dorset Rise
London EC4Y 8EN

E: infouk@exlibrisgroup.com
T: 020 78 32 1700

Forster ECOSPACE

Ecospace's high quality mobile and static shelving systems and picture racking are combined with a fully comprehensive service for design, supply and installation. Recently completed projects include the libraries at Lancaster and Birmingham universities and the Collection of Fine Art from Latin America (ESCALA) at University of Essex.

Mobile and static shelving systems and picture racking can be supplied with an extensive range of accessories and steel, glass or veneered end panels. Mobile shelving can be manually or electronically operated and can also be supplied with screen printed end panels to create an image when shelving stacks are closed together.



Mobile, static & library shelving systems

www.ecospace.co.uk

Forster Ecospace Ltd
Masons Gate
Townsend
Marsh Gibbon
Bicester
Oxon OX27 0EY

E: info@ecospace.co.uk
T: 01869 278002

Gale, Cengage Learning

Cengage Learning is a leading educational content, technology, and services company for the higher education and K-12, professional, library and workforce development markets worldwide. Gale, a part of Cengage Learning, has been a global provider of research resources for libraries and businesses for more than 60 years. Gale is passionate about supporting the continued innovation and evolution of libraries by providing the content, tools and services libraries need to promote information discovery, enable learning and support economic, cultural, and intellectual growth in their communities. For more information, visit www.cengage.co.uk or www.gale.cengage.co.uk



www.cengage.co.uk
www.gale.cengage.co.uk

Cengage Learning
 Cheriton House
 North Way
 Andover
 Hampshire SP10 5BE

E: emea.galereply@cengage.com
 T: 01264 332424

Find us in the Calon Lobby

Innovative Interfaces Inc.

Innovative (www.iii.com) is dedicated to providing leading technology solutions and services that empower libraries and enrich their users worldwide. Innovative offers one of the broadest and most complete portfolios of library automation products on the market today.

Headquartered in Emeryville, California, Innovative serves thousands of libraries in 66 countries and has offices around the world.



www.iii.com

Colin Carter
 Director, EMEA Library
 Engagement

Innovative
 5850 Shellmound Way
 Emeryville, CA 94608

E: ccarter@iii.com
 T: 07887 714867

See us at our fringe meeting.

Kortext

Kortext is the UK's leading digital textbook solutions provider, enabling access to over 300,000 titles from hundreds of publishers, including all the major academic publishers. Universities in the UK use Kortext for the delivery of digital textbook solutions directly to students. By integrating Kortext into the learning ecosystem, lecturers and administrators are able to see how students are engaging with their learning materials through analytics dashboards. And on a more strategic level, universities can correlate the usage data with other student data to track overall progress to help improve learning outcomes.

Kortext is a founding member of Edtech UK and is working with Microsoft to create a universal learning experience through integration with Office365.

Find us in the Calon Lobby.



www.Kortext.com

Kevin Watt
Business Development Director

Kortext
36 Tollard Court
139 West Hill Road
Bournemouth
Dorset BH2 5EH

E: kevinw@kortext.com
T: 07453 260405

OCLC

OCLC is a nonprofit global library cooperative providing shared technology services, original research and community programs so that libraries can better fuel learning, research and innovation. Through OCLC, member libraries cooperatively produce and maintain WorldCat, the most comprehensive global network of data about library collections and services. Libraries gain efficiencies through OCLC's WorldShare, a complete set of library management applications and services built on an open, cloud-based platform. It is through collaboration and sharing of the world's collected knowledge that libraries can help people find answers they need to solve problems. Together as OCLC, member libraries, staff and partners make breakthroughs possible.

Find us in Calon 2.



connect.oclc.org/SCONUL-June16

Andrew Hall
Sales Manager - UK & Ireland

OCLC
City Gate
8 St Mary's Gate
Sheffield S1 4LW

E: uk@oclc.org
T: 0114 267 7500

ProQuest

ProQuest connects people with vetted, reliable information. Key to serious research, the company's products are a gateway to the world's knowledge including dissertations, governmental and cultural archives, news, historical collections, and ebooks. ProQuest technologies serve users across the critical points in research, helping them discover, access, share, create and manage information.

The company's cloud-based technologies offer flexible solutions for librarians, students, and researchers through the ProQuest®, Bowker®, Coutts® information services, Dialog®, Ex Libris®, ebrary®, EBL™, and SIPX® businesses – and notable research tools such as the Summon® discovery service, the RefWorks® citation and document management platform, MyiLibrary® ebook platform, the Pivot® research development tool, and the Intota™ library services platform.

Find us in Calou 2.



www.proquest.com

Adam Rhodes
Regional Sales Manager

ProQuest
The Quorum
Barnwell Road
Cambridge CB5 8SW

E: info@go.proquest.com
T: 01223 271231
Twitter: @proquest

Rackline

Rackline are one of the UK's leading manufacturers of high density storage and shelving systems. As specialists in the education and library sector, Rackline offer a wide range of products that include library shelving, mobile shelving, electronic mobile shelving, low level storage, cabinets and cupboards. Our systems are designed to cater for the various requirements within a busy education environment which includes libraries, archives, laboratories, classrooms and office space.

We have a large team of designers who will attend site, provide storage audits, design space plans and provide detailed quotations for your current budget or for your future plans.

Find us in Calou 2.



www.rackline.com

Tracy Goodwin
Commercial Manager

Rackline
Oaktree Lane
Talke
Newcastle-under-Lyme
Staffordshire ST7 1RX

E: tracy.goodwin@rackline.co.uk
M: 07771 575876
T: 01782 770144

Reassurance Security Services Ltd

The best of both worlds; security and library assistants providing an enhanced level of customer service to your student base throughout the academic year.

The combination of a unique staffing option, working in tandem, has created a niche market for a superior out of hour's service to University libraries.

We provide flexible, cost effective and bespoke services to the University sector, creating added value options to increase the usage of your library space during the out of hours opening.

Interested in finding out more? Please visit the stand for a chat!

Find us in Calou 2.



www.reassurancesecurityservices.co.uk

www.reassuranceresourcemanagement.co.uk

Kathryn McGowan
Contract Director

Reassurance Security Services
Limited
1st Floor, Venture House
6 Silver Court, Watchmead
Welwyn Garden City
Hertfordshire AL7 1TS

E: Kathryn@reassurancesecurityservices.co.uk

E: Kathryn@reassuranceresourcemanagement.co.uk

T: 0845 372 1995

RefME

RefME Ltd., is a multi-platform tool that automates the citation, reference list and bibliography process in over 7,500 citation styles including Harvard, MLA and APA. It's the world's leading and most accurate citation generator and management tool that allows users to cite any source with a click via web platform or mobile app.

Hundreds of leading institutions around the world, including Stanford, University of California Irvine and St. Andrews, have recommended RefME to their students. They now enable students to reference their institutional style with a level of accuracy and automation unseen before.

For more information, please visit refme.com or contact us at: institute@refme.com

Find us in the Calou Lobby and see us at the conference dinner and at our fringe meeting.



RefME

www.refme.com

Jock Wright
Academic Partnerships

RefME Ltd.
Unit 1, New North House
Canonbury Business Centre
202-208 New North Road
London N1 7BJ

E: jock@refme.com
T: 07946 653 220

SirsiDynix

SirsiDynix is the global leader in library automation software with customers around the world serving 300 million library users worldwide. Working in partnership with academic libraries, SirsiDynix helps scholarly communities thrive by connecting people with information resources that educate and inspire.

Our BLUEcloud library services platform delivers the *Best Library User Experience* through attractive mobile and web interfaces, coupled with open, feature-rich library management system functionality and enterprise-ready analytics. Talk to Andy Panayiotou to discover how SirsiDynix can help your library achieve impact with its software and services, or learn more at sirsidynix.com.



SirsiDynix®

www.sirsidynix.com

SirsiDynix
54, Clarendon Road
Watford WD17 1DU

E: sales-uk@sirsidynix.com
T: 01923 202901

Find us in Calon 2.

Talis

Talis help universities in eight countries, including over 50% of all UK universities, to manage and deliver learning resources online. Higher Education Institutions worldwide are reinvesting time and money saved from simpler workflows to develop further value-add services.

Talis Aspire provides deep integrations with existing systems to deliver fast and seamless access to students, and a consistent experience. The Cloud based SaaS system hosts nearly 500,000 reading lists, with over 20 million references, serving in excess of 176 million views of reading lists by students each year.

Visit talis.com to find out how we support libraries with their role in teaching and learning.



www.talis.com

Paul Dibble
Sales Manager

Talis Education Limited
48 Frederick Street
Birmingham B1 3HN

E: paul.dibble@talis.com

Find us in the Calon Lobby.

Telepen

TELEPEN are the leading suppliers of Access Control systems to academic libraries in the UK and Ireland.

Telepen has been supplying Access Control Systems to Universities for over 15 years and recently launched Juno, its latest version which includes Group Study Room Booking, Study Space Management and Area Occupancy Infographics as well as the temporary card kiosk which automates the process of issuing temporary cards for students and visitors.

Telepen also now offer the full range of Lyngsoe Self Service library equipment including Sorters for Automated Book Handling.



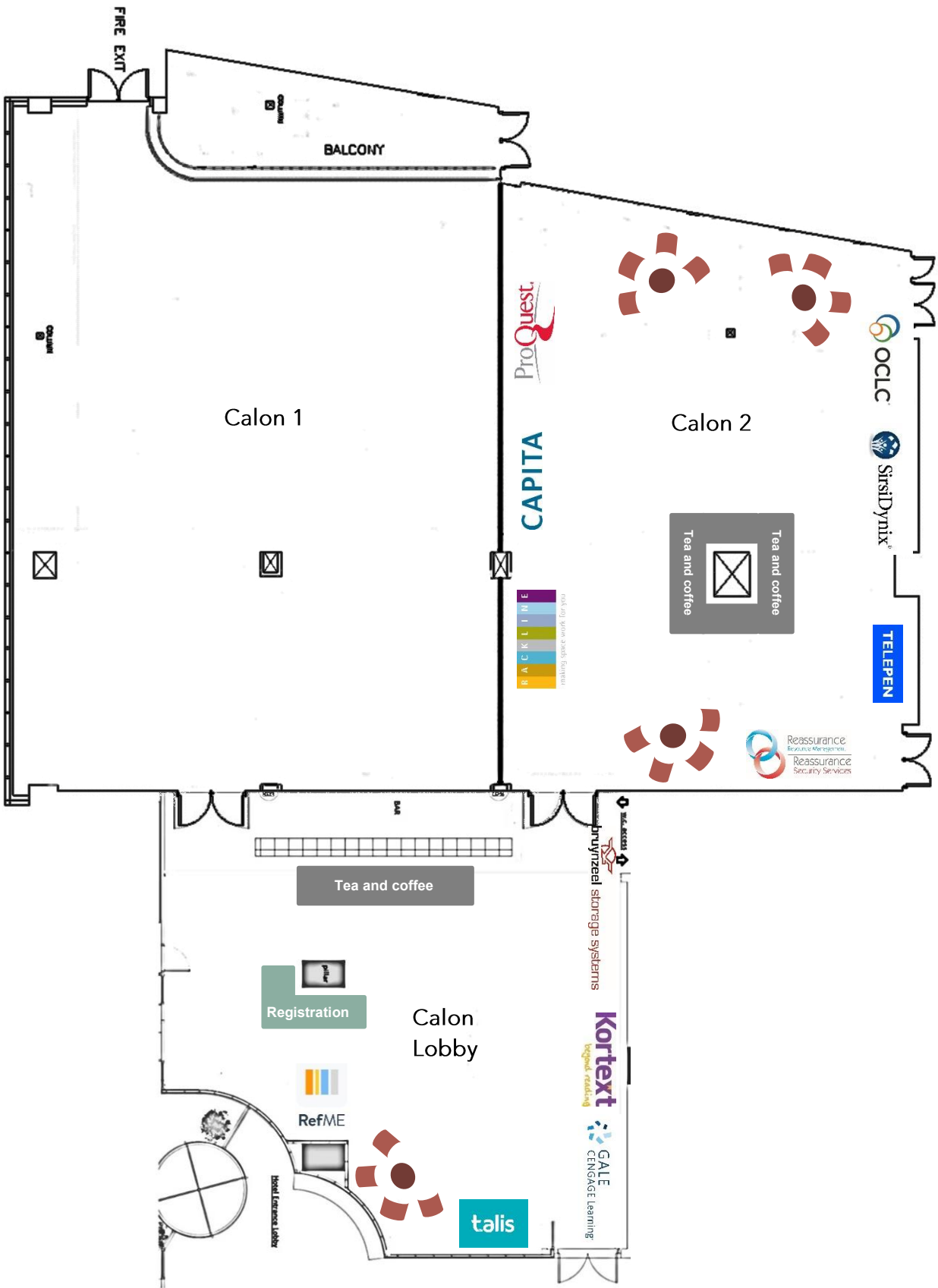
www.telepen.co.uk

Telepen
Arden Grove
Harpenden
Hertfordshire AL5 4SL

E: sales@telepen.co.uk
T: 01582 769991

Find us in Calson 2.

Exhibitor layout



SCONUL would like to thank the following sponsors for their support

